

To What Extent Buccal Mucosal Graft Can Shrink Immediately after Harvesting during Substitutional Urethroplasty for Stricture Urethra?

ARPAN CHOUDHARY¹, PRASHANT PATEL², AVINASH PRATAP SINGH THAKUR³, FANINDRA SINGH SOLANKI⁴

ABSTRACT

Introduction: Long segment stricture urethra is a difficult urological disease to treat. Substitutional urethroplasty utilising the Buccal Mucosal Graft (BMG) has shown promising results. Still up to one fourth of the patients can develop recurrence in the long term. Shrinkage of BMG immediately after harvesting, is a less studied phenomenon. It may compromise the tension free placement of BMG over the urethral defect, especially in long strictures. This may ultimately affect the final outcome.

Aim: To study postharvest shrinkage of the BMG in patients undergoing substitutional urethroplasty.

Materials and Methods: A prospective observational study was conducted during the study period from 2018 to 2020. All 18 patients of substitutional urethroplasty with BMG were enrolled. The baseline clinical profile was noted. Preharvest size of BMG was calculated and marked over the Buccal Mucosa (BM). Postharvest size was measured immediately after graft removal from the oral cavity. Changes in the donor area were also assessed. Alteration in BMG size and donor site area was analysed using paired t-test. Alterations in tobacco and

non-tobacco users were compared using an unpaired t-test. Descriptive data were presented in the form of mean, range, percentage and standard deviation. Statistical analysis was completed using SPSS software, version 21.0 (IBM Corp, NY, USA). Statistical significance was kept below 0.05.

Results: There were 18 cases which were finally available for analysis. Mean age was 32.9±14.2 years. Balanitis Xerotica Obliterans (BXO) was the most common aetiology. Pan-anterior stricture was found in 9/18 of cases. Mean pre and postharvest BMG size was 7.7×1.8 and 6.9×1.6 cm, respectively. An 8.8% decrease in length ($p<0.001^{**}$) and 10.8% decrease in width of BMG ($p<0.001^{**}$) occurred after harvesting, which were statistically significant. A significant Increase in the donor site area was also seen (18.5%, $p<0.001^{**}$).

Conclusion: A shrinkage of around 9% in the length and 11% of the width was seen in BMG after harvesting. The study suggests taking an extra 10% of measured size of BMG, in order to compensate for the expected shrinkage. The donor site area also increases and can be left open to heal by itself.

Keywords: Graft shrinkage, Oral Mucosa, Postharvest shrinkage, Urethral stricture

INTRODUCTION

Urethral stricture disease is fairly common in Indian population affecting mainly young to middle aged persons [1]. Aetiological factors include trauma, infection, inflammation and iatrogenic injury to the urethra [2]. BXO is an inflammatory disease of the anterior urethra which affects the prepuce and glans initially [3]. Then, it spreads proximally up to the bulbar urethra and causes severe narrowing of entire urethral lumen [4]. Sometime infective pathology, prior to surgery and repeated urethral dilatations can also cause narrowing of long segment of the urethra [5]. Surgery in the form of substitutional urethroplasty is the treatment of choice of these cases. It can be done either in single or two stage procedure utilising oral mucosal graft [6]. One stage procedure involves the opening of narrow urethra, application of graft and closure of urethra in one sitting; whereas two stage procedure requires completion of last step after a period of 3-6 months [2].

A BMG is an excellent choice of graft [7]. A considerable length of BMG is available in a healthy person and it can be harvested from both inner cheeks [8]. During surgery after dissection of the urethra, length of the urethral defect is measured and graft is harvested [9]. Shrinkage of Split-thickness Skin Graft (SSG) is well described specially in the literature [10,11]. Few reports from maxillo-facial surgeries have studied the shrinkage of gingival grafts [12]. Literature from plastic surgery denotes the shrinkage of graft as contraction, which is of primary and secondary type [13]. Primary contraction is the shrinkage of graft immediately after harvest;

whereas secondary contraction is the shrinkage occurring as the graft heals on the recipient bed. A Full-thickness Skin Graft (FSG) shows primary contraction upto 40%, while a SSG contracts less (10-20%) [13]. BMG being a full thickness graft may behave like a FSG [14]. However, there is a lacuna in knowledge regarding the extent of primary contraction of BMG in the urological procedures and its clinical significance. In present study, this issue was explored objectively and assessed its clinical importance in the routine practice.

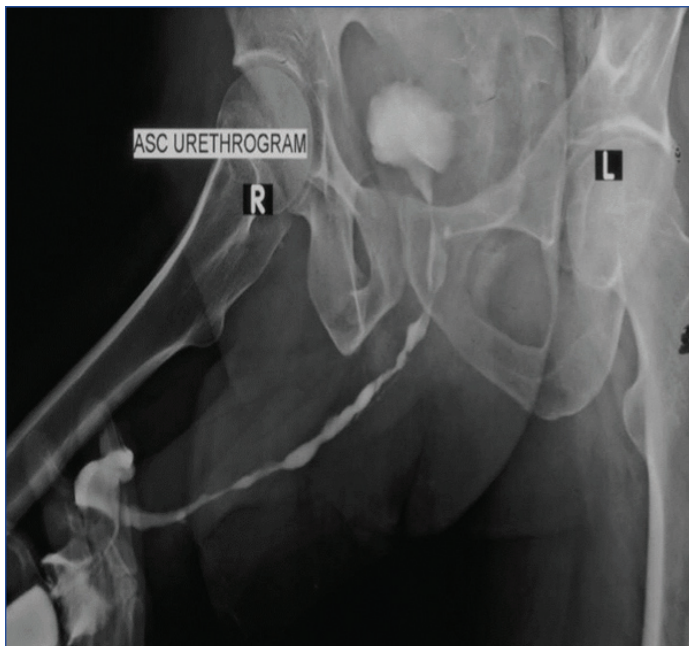
MATERIALS AND METHODS

Study Design

A prospective observational study was conducted in the Department of Urology, NSCB Medical College, Jabalpur, from 2018 to 2020. Ethical committee approval was not taken, as the study involved observation of routine steps of a surgical procedure. No intervention of any kind or comparison with any other technique was involved. Declarations of Helsinki were followed. Confidentiality of data was maintained and identity of the patients was not disclosed. Patients gave their informed consent for their participation.

Inclusion criteria: Patients of obstructive voiding symptoms due to urethral stricture disease were included in the study. Forty such patients were screened by history, examination, uroflowmetry, ultrasound and Ascending Urethrogram (ASU). Patients with long

segment anterior urethral stricture (>2 cm) on ASU were selected for substitutional urethroplasty with BM [Table/Fig-1].



[Table/Fig-1]: Ascending urethrogram showing long segment severe narrowing of penile and bulbar urethra.

Exclusion criteria: (a) stricture length <2 cm; (b) planned non-substitutional urethroplasty; (c) planned substitutional urethroplasty with use of tissue other than BM. Finally, 18 patients were enrolled into the study. Data from both single and two stage procedure were taken.

Study Protocol

Baseline clinical data including age, nature of symptoms, duration of symptoms, history of prior surgery, tobacco consumption, aetiology and location of stricture, from all the patients were collected. Oral cavity was examined preoperatively for suitability of application of BMG. Mouth opening was assessed by inter-incisor distance [15]. BM was evaluated for appearance, texture, colour and for presence of any abnormal lesions or fibrous bands. Denture examination included presence of any loose teeth, staining and condition of gingival mucosa. Chlorhexidine mouth wash was given to all patients for cleaning of oral cavity thrice daily three days prior to surgery. Patients were asked to stop smoking or tobacco intake for at least 1 month prior to the surgery. Patients with poor oral hygiene or dental infection were treated by concerned specialist beforehand.

One-Stage Surgical Approach

This was selected based on the ability to insert a 6 Fr infant feeding tube from meatus upto the bladder. It rules out the presence of any tight circumferential stricture, as inferior outcomes have been reported with one-stage procedure in circumferential strictures [16,17]. Substitutional urethroplasty was started in lithotomy position under spinal anesthesia. Midline perineal incision was given. Bulbospongiosus muscle was freed from underlying urethra at one side. Urethra was mobilised from the underlying corpus cavernosa dorso-laterally, as per the Kulkarni technique [18,19]. Urethra was further mobilised upto peno-bulbar junction, depending on the presumed stricture area. If stricture extended into penile urethra also, then penile inversion was accomplished with dissection of penile urethra. Stricture ends were identified with the help of insertion of urethral dilators via both retrograde and antegrade manner. Stricture site was opened dorso-laterally and length of urethral defect was measured with the help of a surgical scale. BMG was applied dorso-laterally and fixed to the underlying corpora with Polyglactin, 4-0 suture. Few sutures for quilting were also placed. Mucosa to

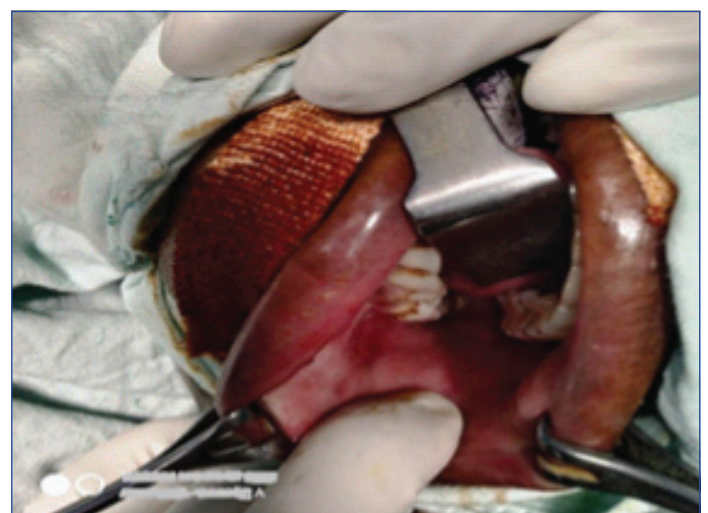
mucosa suturing was done on medial side of graft to the urethra; while a mucosa to cavernosal suturing was accomplished on another side, after placement of Foley's catheter. Bulbospongiosus muscle was re-approximated and incision was closed.

Two-stage Approach

It was chosen in case of inability to pass a 6 Fr infant feeding tube upto the bladder or if there was complete obliteration of long segment of urethral segment on ASU image. These patients first underwent lay open urethroplasty [20]. In which, after the midline incision over penis or perineum, the stricture segment of the urethra was opened ventrally straightaway. A dorsal midline incision was given over the opened up urethra. Incision was deepened via blunt dissection to make space for the graft application. Length and width of the urethral defect were measured. By default, we added 10% in length of urethral defect to get desired BMG length (Preharvest length) in both approaches. Width of graft was taken in such a way to have a total urethral plate width of around 20 mm, in order to get a lumen of 20 Fr after tabularisation. Graft was applied over the dorsal incised part of the urethra. Both sides of opened-up urethra were sutured to the surrounding skin with Polyglactin, 4-0 suture. Periodic assessment of graft taken was done bi-monthly. After a period of 6 months, if graft intake was acceptable, patient was taken for a 2nd stage procedure. In which, two parallel incisions were given along the side of urethral plate to free it from the skin. They were deepened enough to mobilise the urethra. Tabularisation of the urethra was started proximally with Polyglactin, 4-0, round body, running sutures and progressed distally. Surrounding tissue was approximated in the midline to reinforce the urethral closure and skin was closed.

BMG Harvesting

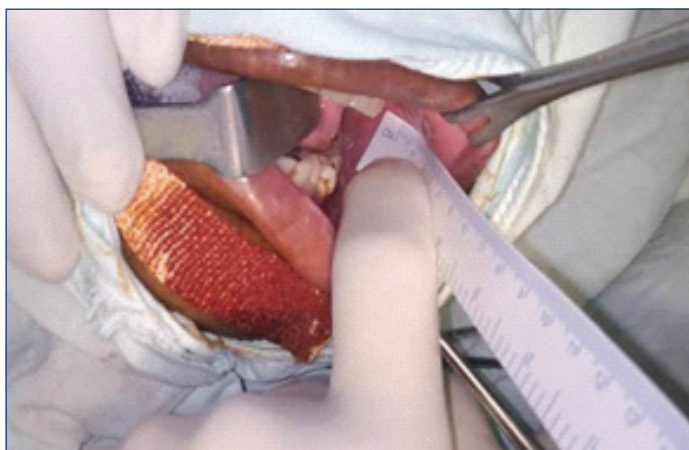
The patient was put under general anaesthesia and an endotracheal tube was kept opposite to the proposed site of BMG in oral cavity [Table/Fig-2].



[Table/Fig-2]: Oral cavity being prepared, and site inspected for the position of stensen's duct orifice and the probable donor area.

Anesthetist was asked to pack the posterior oro-pharyngeal cavity. After painting of mouth and oral cavity with Betadine 5% solution, draping was done. A desired length and width of BMG was measured over the BM with surgical scale and marked with a surgical pen [Table/Fig-3].

A 10 ml of 2% Xylocaine with Adrenaline was diluted with the equal amount of normal saline and the mixture was injected at the site of harvest for the hydro-dissection. BMG was incised along the marked margins and carefully freed from the underlying muscle. After harvesting from oral cavity, BMG was kept in a kidney tray filled with normal saline, until its placement over the urethra. Measurement of length and width of the graft were taken again with the surgical scale [Table/Fig-4].



[Table/Fig-3]: Measurement of BMG being taken over the ink marked area.



[Table/Fig-4]: Postharvest measurement of BMG.

Donor site defect length and width were also measured. Haemostasis was secured with bipolar electrocautery for small bleeding points and with the under-running of base using Polyglactin, 4-0, RB, suture for large bleed. Donor site was packed with the wet gauze. A donor site closure was optional depending on the surgeon's choice. It was closed with running sutures catgut 3-0 RB suture in case of an elliptical shaped defect, favouring the closure. Otherwise defect was left open to heal. BMG was defatted and applied over the dorsum of the urethra. Postoperatively, patients were asked to apply ice pack application over the side of cheek. Patients were instructed for repeated mouth wash with Chlorhexidine and to drink cold fluids from the next day morning. They were also instructed to start gentle tooth brushing after 2 days of surgery.

STATISTICAL ANALYSIS

Basic patient data as stated in the study protocol was assessed. Preharvest size of BMG was taken from the ink marked measurements over the BM. Postharvest BMG size was measured immediately after the graft removal with the surgical scale. Donor site defect area was also measured similarly. All three measurements were put in a tabulated form. Pre- and postharvest size of BMG as well as donor site were compared using a paired t-test. Alterations in tobacco and non-tobacco users were compared using an unpaired t-test. Descriptive data were presented in the form of mean, range, percentage and standard deviation. Statistical analysis was completed using Statistical Package for the Social Sciences (SPSS) software, version 21.0 (IBM Corp, NY, USA). Statistical significance was kept below 0.05.

RESULTS

Baseline Characteristics

There were 18 patients finally available for analysis. Mean age

of the study participants was 32.9 ± 14.2 years. Two third of the patients had obstructive voiding symptoms for more than 6 months [Table/Fig-5]. BXO was the most common causative factor found in 61.1% of the cases. Three patients had a history of prior reconstructive surgery. Pan-anterior stricture was found in half of the cases. About 61% patients consumed tobacco in some form.

Variables	Frequency (n=18)
Age (years)	32.9±14.2 (16-65)
Duration of symptom (months)	8.3±3.7 (3-18)
≤6 months	6/18 (33.3%)
>6 months	12/18 (66.7%)
Symptoms	
Poor flow	16/18 (88.9%)
Straining	12/18 (66.7%)
Incomplete emptying	12/18 (66.7%)
Frequency	10/18 (55.5%)
Nocturia	8/18 (44.4%)
Aetiology	
BXO*	11/18 (61.1%)
Infectious origin	4/18 (22.2%)
Iatrogenic	2/18 (11.1%)
Repeated dilatations	1/18 (5.5%)
Tobacco consumption	11/18 (61.1%)
Prior surgery	3/18 (16.7%)
Location of urethral stricture	
Penile	5/18 (27.8%)
Bulbar	4/18 (22.2%)
Bulbo-penile	9/18 (50.0%)

[Table/Fig-5]: Baseline characters of the study population.

*Balanitis xerotica obliterans

BMG Shrinkage Assessment

Single stage (dorso-lateral onlay) substitutional urethroplasty was performed in 10/18 cases. Rest eight underwent lay open urethroplasty. Mean pre and postharvest BMG sizes were 7.7×1.8 cm and 6.9×1.6 cm, respectively [Table/Fig-6].

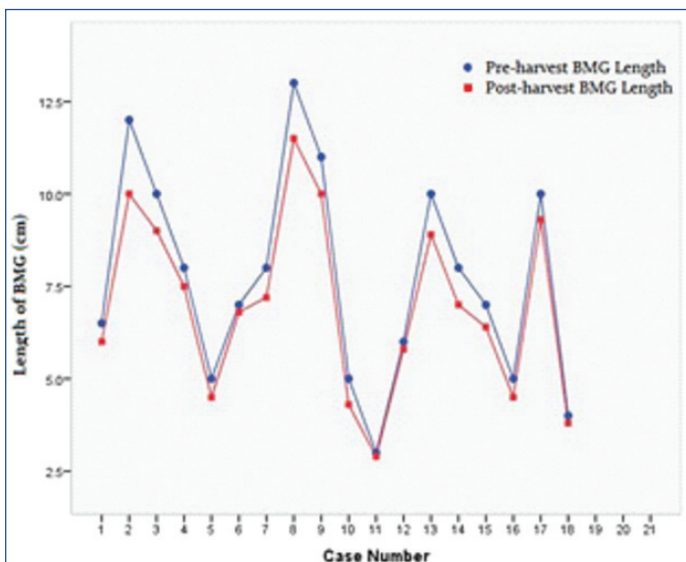
An 8.8% decrease in length and 10.8% decrease in width of BMG were discovered after harvesting, which were statistically significant ($p < 0.001$) [Table/Fig-6]. Tobacco users had a lesser percentage decrease in length than non-tobacco users (7.2% vs 11.3%, $p = 0.02^*$), while no such difference was observed in width alteration (10.9% vs 10.7%, $p = 0.95$). Donor site length and width were 7.9 ± 2.9 and 2.0 ± 0.3 cm, respectively. Increase in donor site area after graft harvesting (13.8 cm^2 vs 16.4 cm^2) was also statistically significant ($p < 0.001^{**}$). Similar degree of donor site alterations were not noted among tobacco and non-tobacco users ($p = 0.98$). Line charts showing a decrease in postharvest length and width of the BMG [Table/Fig-7 and 8].

DISCUSSION

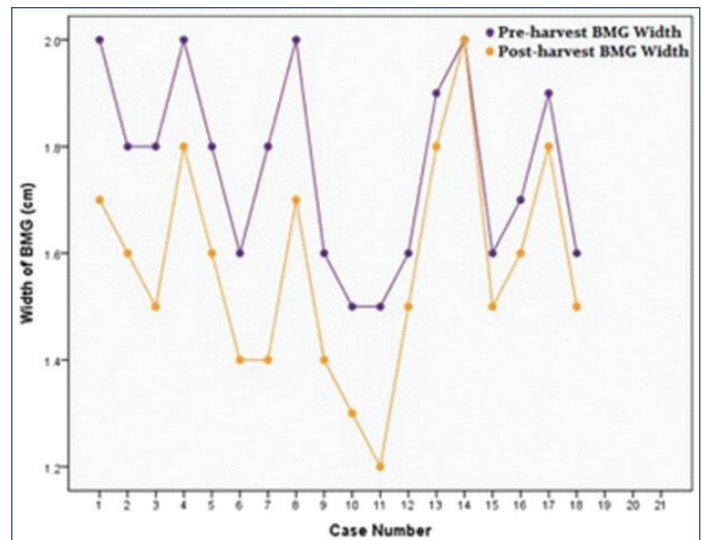
Substitutional urethroplasty has changed the management of long segment stricture of urethra substantially [21]. Use of the grafts not only provides a replacement to the scarred and narrowed urethral lining, but also produces durable outcomes [22]. BMG has sustained its good efficacy, since its initial description in the urethroplasty in late 19th century by Kirill Sapezhko, from Ukraine [23]. But only after the reports of two pediatric surgeons Burger RA et al., and Dessanti A et al., it could gain popularity widely [24,25]. Postoperative shrinkage of BMG in urethra has been reported widely in follow-up studies. Barbagli G et al., reported a failure rate

Variables		Frequency (n=18)	p-value
Side of Inner cheek			
Left		8 (44.4%)	
Right		5 (27.8%)	
Both		5 (27.8%)	
Donor site closure			
Yes		5 (27.8%)	
No		13 (72.2%)	
BMG thickness		3.0±0.7 (2.0-4.2)	
Preharvest length of BMG# (cm)		7.7±2.8 (3.0-13.0)	<0.001**
Postharvest length of BMG (cm)		6.9±2.4 (2.9-11.5)	
Overall		8.8±3.8%	
% Decrease in length of BMG after harvest	Tobacco user	7.2±2.9%	0.02*
	Non-tobacco user	11.3±3.7%	
Preharvest width of BMG (cm)		1.8±0.2 (1.5-2.0)	<0.001**
Postharvest width of BMG (cm)		1.6±0.2 (1.2-2.0)	
Overall		10.8±5.7%	
% Decrease in width of BMG after harvest	Tobacco user	10.9±4.7%	0.95
	Non-tobacco user	10.7±7.5%	
Preharvest donor site length (cm)		7.7±2.8 (3.0-13.0)	0.003**
Postharvest donor site length (cm)		7.9±2.9 (3.1-13.4)	
Preharvest donor site width (cm)		1.8±0.2 (1.5-2.0)	<0.001**
Postharvest donor site width (cm)		2.0±0.3 (1.6-3.0)	
Preharvest donor site area (cm ²)		13.8±5.8 (4.5-26.0)	<0.001**
Postharvest donor site area (cm ²)		16.4±7.2 (5.0-31.0)	
Overall		18.5±14.8%	
% Increase in donor site area after harvest	Tobacco user	18.5±16.3%	0.98
	Non-tobacco user	18.4±13.4%	

[Table/Fig-6]: Characteristics of BM graft and donor site area along with comparison of pre and postharvest measurements.
Student t-test paired and unpaired; *Buccal mucosal graft (BMG); *Statistically significant; **Statistically highly significant



[Table/Fig-7]: Line chart showing a decrease in postharvest length of the BMG.



[Table/Fig-8]: Line chart showing a decrease in postharvest width of the BMG.

rapidly, especially after removal of the catheter. Prior knowledge of extent of immediate shrinkage of BMG can give the surgeon a thought to harvest an extra size of BMG. To some extent, shrinkage can be dealt by spreading and suture fixation of the graft. However, this can be challenging, if the size of urethral defect is large as the complexities of surgery increase with increasing stricture length [6,28,29].

In this study, an 8.8% decrease in length and 10.8% decrease in the width of the BMG. An extra 10% of the length of the graft due to the prior experiences with urethroplasty surgeries was already taken. Due to this, it was possible to place in a firm but relaxed position. An extra length can probably compensate for the shrinkage of BMG after harvesting. This was nearly equal to the percentage decrease in size of BMG, in present case. A significant degree of effect of tobacco consumption on alteration in graft length was noticed. Tobacco users showed lesser shrinkage in length than the non-tobacco users. Reason may be some amount of loss of elastic tissue in BMG, after prolonged tobacco consumption [30,31]. Zain RB et al., described various lesions of oral mucosa affected by tobacco chewing, such as chewer's mucosa, submucous fibrosis, lichenoid lesions etc., [32].

An increase in donor size area after graft harvesting was also noticed. Reason may be the inherent elasticity of the BM. This might interfere with the closure of the donor site, along with the shape of the donor site area. Closure however mainly depends on the shape, as suggested by Barbagli G et al., [33]. An elliptical shape helps in the closure, while a rectangular shape doesn't [33]. The present study only close it in their five out of 18 cases, due to the elliptical shaped defect. Reasons for non-closure in majority of present cases were more rectangular shaped defects and refraining from the closure with a tension over suture line. Recently, studies of Wood DN et al., and Rourke K et al., have supported the view of leaving the donor site open [34,35]. This can rather decrease the postoperative pain and lessen the restriction in mouth opening later. Reason for this may be the undue traction over the mucosa after closure of a large defect [36]. Leaving the donor site open saves the operative time. This approach can also allow the surgeon to take a little extra size of the graft, without worrying about the need for closure [35]. It is important, especially while contemplating around 10% of shrinkage of BMG after harvesting.

Limitation(s)

Limitations of this study were small sample size, lack of group comparisons and no correlation with the clinical outcome. Conclusive effect of tobacco on BMG shrinkage is also difficult to make due to limited number of cases, variation in duration and form of tobacco intake. A larger study with stratification of all these factors may give the right answer.

CONCLUSION(S)

Based on the findings of present study, it was found that BMG shrank to about 9% in the length and about 11% of the width, immediately after harvesting from the oral cavity. An increase in the donor area is also noted after the graft removal. This study suggested taking an extra 10% of the measured urethral defect size, in order to adjust for the expected shrinkage. Donor area can be left open, if repair is difficult and the suture line appears to be in tension.

REFERENCES

- [1] Kulkarni SB, Joshi PM, Venkatesan K. Management of panurethral stricture disease in India. *J Urol.* 2012;188(3):824-30.
- [2] Elkassaby A, Kotb M. Management of anterior urethral strictures with buccal mucosa: Our pioneering experience. *Afr J Urol.* 2016;22(1):24-32.
- [3] Chung ASJ, Suarez OA. Current treatment of lichen sclerosus and stricture. *World J Urol.* 2019; Dec 5. doi: 10.1007/s00345-019-03030-z. [Epub ahead of print].
- [4] Charlton OA, Smith SD. Balanitis xerotica obliterans: A review of diagnosis and management. *Int J Dermatol.* 2019;58(7):777-81.
- [5] Martins FE, Kulkarni SB, Joshi P, Warner J, Martins N. Management of long-segment and panurethral stricture disease. *Adv Urol.* 2015;2015:853914.
- [6] Horiguchi A. Substitution urethroplasty using oral mucosa graft for male anterior urethral stricture disease: Current topics and reviews. *Int J Urol.* 2017;24(7):493-503.
- [7] Lumen N, Oosterlinck W, Hoebeke P. Urethral reconstruction using buccal mucosa or penile skin grafts: Systematic review and meta-analysis. *Urol Int.* 2012;89(4):387-94.
- [8] Barbagli G, Balò S, Montorsi F, Sansalone S, Lazzeri M. History and evolution of the use of oral mucosa for urethral reconstruction. *Asian J Urol.* 2017;4(2):96-101.
- [9] Levine LA, Strom KH, Lux MM. Buccal mucosa graft urethroplasty for anterior urethral stricture repair: Evaluation of the impact of stricture location and lichen sclerosus on surgical outcome. *J Urol.* 2007;178(5):2011-15.
- [10] Levy ME, Elliott SP. Graft use in bulbar urethroplasty. *Urol Clin North Am.* 2017;44(1):39-47.
- [11] Berezovsky AB, Pagkalos VA, Silberstein E, Shoham Y, Rosenberg L, Krieger Y. Primary contraction of skin grafts: A porcine preliminary study. *Plastic and Aesthetic Research.* 2015;2(1):22-26.
- [12] Cifcibasi E, Karabey V, Koyuncuoglu C, Duzagac E, Genceli E, Kasali K, et al. Clinical evaluation of free gingival graft shrinkage in horizontal and vertical dimensions. *J Istanbul Univ Fac Dent.* 2015;49(3):11-16.
- [13] Thornton JF, Gosman AA. Skin grafts and skin substitutes and principles of flap. *Selected Readings in Plastic Surgery.* 2004;10(1):12-13.
- [14] Bryk DJ, Yamaguchi Y, Zhao LC. Tissue transfer techniques in reconstructive urology. *Korean J Urol.* 2015;56(7):478-86.
- [15] More CB, Gupta S, Joshi J, Varma SN. Classification system for oral submucous fibrosis. *Journal of Indian Academy of Oral Medicine and Radiology.* 2012;24(1):24-29.
- [16] Venn SN, Mundy AR. Early experience with the use of buccal mucosa for substitution urethroplasty. *Br J Urol.* 1998;81(5):738-40.
- [17] McAninch JW. Reconstruction of extensive urethral strictures: Circular fasciocutaneous penile flap. *J Urol.* 1993;149(3):488-91.
- [18] Kulkarni S, Barbagli G, Sansalone S, Lazzeri M. One-sided anterior urethroplasty: A new dorsal onlay graft technique. *BJU Int.* 2009;104(8):1150-55.
- [19] Kulkarni S, Joshi P, Surana S, Hamouda A. Management of Panurethral Stricture. *Afr J Urol.* 2016;22(2):33-39.
- [20] Mori RL, Angermeier KW. Staged urethroplasty in the management of complex anterior urethral stricture disease. *Transl Androl Urol.* 2015;4(1):29-34.
- [21] Barbagli G, Kulkarni SB, Fossati N, Larcher A, Sansalone S, Guazzoni G, et al. Long-term follow-up and deterioration rate of anterior substitution urethroplasty. *J Urol.* 2014;192(3):808-13.
- [22] Soave A, Kluth L, Dahlem R, Rohwer A, Rink M, Reiss P, et al. Outcome of buccal mucosa graft urethroplasty: A detailed analysis of success, morbidity and quality of life in a contemporary patient cohort at a referral center. *BMC Urol.* 2019;19(1):18.
- [23] Korneyev I, Ilyin D, Schultheiss D, Chapple C. The first oral mucosal graft urethroplasty was carried out in the 19th century: the pioneering experience of Kirill Sapezhko (1857-1928). *Eur Urol.* 2012;62(4):624-27.
- [24] Bürger RA, Müller SC, el-Damanhoury H, Tschakaloff A, Riedmiller H, Hohenfellner R. The buccal mucosal graft for urethral reconstruction: A preliminary report. *J Urol.* 1992;147(3):662-64.
- [25] Dessanti A, Rigamonti W, Merulla V, Falchetti D, Caccia G. Autologous buccal mucosa graft for hypospadias repair: An initial report. *J Urol.* 1992;147(4):1081-84.
- [26] Breyer BN, McAninch JW, Whitson JM, Eisenberg ML, Mehdizadeh JF, Myers JB, et al. Multivariate analysis of risk factors for long-term urethroplasty outcome. *J Urol.* 2010;183(2):613-17.
- [27] Kessler TM, Schreiter F, Kralidis G, Heitz M, Olanas R, Fisch M. Long-term results of surgery for urethral stricture: A statistical analysis. *J Urol.* 2003;170(3):840-44.
- [28] Jasionowska S, Brunckhorst O, Rees RW, Muneer A, Ahmed K. Redo-urethroplasty for the management of recurrent urethral strictures in males: A systematic review. *World J Urol.* 2019;37(9):1801-15.
- [29] Campos-Juanatey F, Bugeja S, Ivaz SL, Frost A, Andrich DE, Mundi AR. Management of penile urethral strictures: Challenges and future directions. *World Journal of Clinical Urology.* 2016;5(1):01-10.
- [30] Morita A. Tobacco smoke causes premature skin aging. *J Dermatol Sci.* 2007;48(3):169-75.
- [31] Czogała J, Goniewicz ML, Czubek A, Gołabek K, Sobczak A. Wpływ palenia papierosów na wygląd, starzenie się i zmiany patologiczne skóry i błon śluzowych [Effect of tobacco smoking on skin and mucosa appearance, ageing and pathological conditions]. *Przegl Lek.* 2008;65(10):732-36.
- [32] Zain RB, Ikeda N, Gupta PC, Warnakulasuriya S, van Wyk CW, Shrestha P, Axell T. Oral mucosal lesions associated with betel quid, areca nut and tobacco chewing habits: Consensus on a workshop held in Kuala Lumpur, Malaysia, November 25-27, 1996. *J Oral Pathol Med.* 1999;28(1):01-04.
- [33] Barbagli G, Balò S, Sansalone S, Lazzeri M. How to harvest buccal mucosa from the cheek. *Afr J Urol.* 2016;22(1):18-23.
- [34] Wood DN, Allen SE, Andrich DE, Greenwell TJ, Mundy AR. The morbidity of buccal mucosal graft harvest for urethroplasty and the effect of nonclosure of the graft harvest site on postoperative pain. *J Urol.* 2004;172(2):580-83.
- [35] Rourke K, McKinny S, St Martin B. Effect of wound closure on buccal mucosal graft harvest site morbidity: Results of a randomized prospective trial. *Urology.* 2012;79(2):443-47.
- [36] Barbagli G, Fossati N, Sansalone S, Larcher A, Romano G, Dell'Acqua V, et al. Prediction of early and late complications after oral mucosal graft harvesting: Multivariable analysis from a cohort of 553 consecutive patients. *J Urol.* 2014;191(3):688-93.

PARTICULARS OF CONTRIBUTORS:

1. Assistant Professor, Department of Urology, Superspeciality Hospital, NSCB Medical College, Jabalpur, Madhya Pradesh, India.
2. Assistant Professor, Department of Urology, Superspeciality Hospital, NSCB Medical College, Jabalpur, Madhya Pradesh, India.
3. Assistant Professor, Department of Urology, Superspeciality Hospital, NSCB Medical College, Jabalpur, Madhya Pradesh, India.
4. Associate Professor, Department of Surgery, Superspeciality Hospital, NSCB Medical College, Jabalpur, Madhya Pradesh, India.

NAME, ADDRESS, E-MAIL ID OF THE CORRESPONDING AUTHOR:

Prashant Patel,
F-17, Government Quarters, Adarsh Nagar, In Front of Heera Sweets, Gwarighat Road,
Jabalpur-482008, Madhya Pradesh, India.
E-mail: patelprashant9909@gmail.com

AUTHOR DECLARATION:

- Financial or Other Competing Interests: None
- Was Ethics Committee Approval obtained for this study? No
- Was informed consent obtained from the subjects involved in the study? Yes
- For any images presented appropriate consent has been obtained from the subjects. Yes

PLAGIARISM CHECKING METHODS: [Jain H et al.]

- Plagiarism X-checker: Apr 16, 2020
- Manual Googling: Jun 11, 2020
- iThenticate Software: Jun 26, 2020 (11%)

ETYMOLOGY: Author Origin

Date of Submission: **Apr 16, 2020**
Date of Peer Review: **May 05, 2020**
Date of Acceptance: **Jun 12, 2020**
Date of Publishing: **Jul 01, 2020**